



ERECTASSIST™

The simple way to maintain an Erection

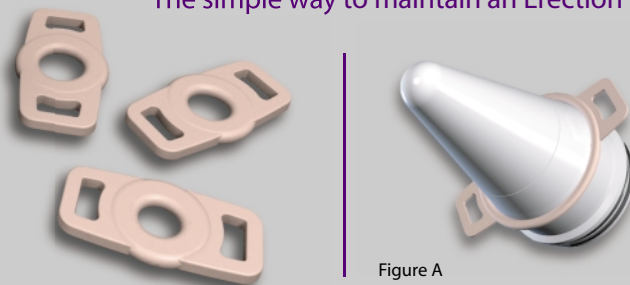


Figure A

ERECTASSIST includes everything you'd get with the ERECTEASE system excluding the vacuum pump. It provides a simple and convenient way to keep blood within the penis once a natural erection has been attained.

The loading cone is used to stretch the correct size 'retention ring' over the transfer collar (Figure A). This collar is then placed over the penis and the retention ring is slid off and onto the base of the penis (Figure B). This comfortably restricts the blood flow out of the penis and thereby maintains the erection.

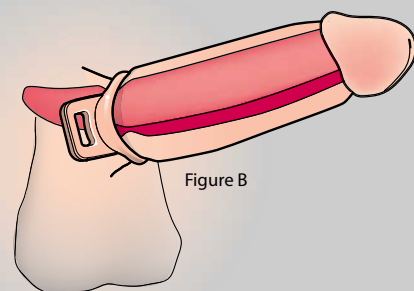


Figure B

For further information please contact our Sales Department at:

Mediwatch PLC, Swift House
Cosford Lane, Rugby, CV21 1QN, UK

Telephone: +44 (0)1788 547888

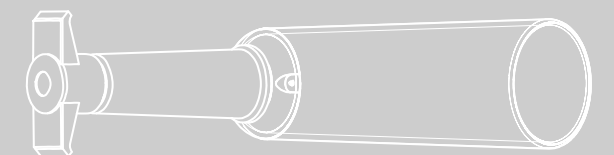
Fax: +44 (0)1788 536434

Email: info@mediwatch.com

Web: www.mediwatch.com

ERECTEASE™

The Vacuum Pump for a Simple Fast Erection



including:
ERECTASSIST™
The simple way to maintain an Erection

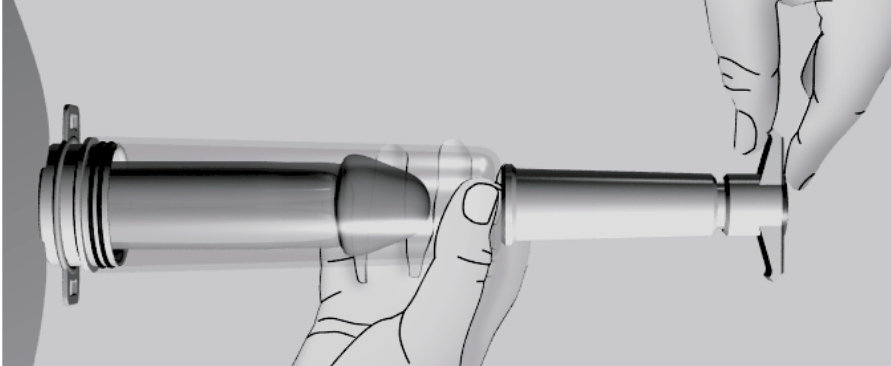


CODE:ERECTEASE & ERECTASSIST.ENG.REV01.APRIL.2005



ERECTEASE™

The Vacuum Pump for a Simple Fast Erection

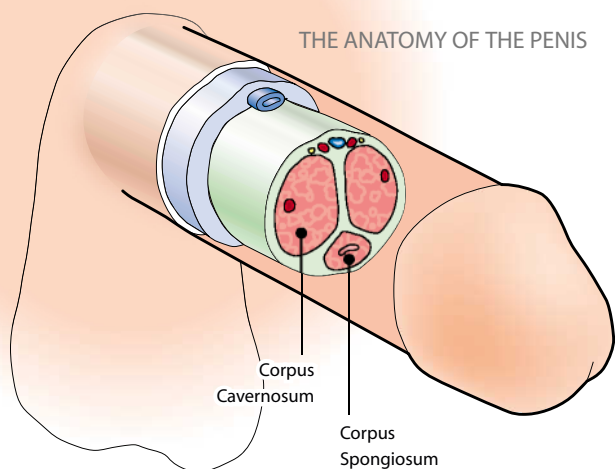


The ERECTEASE is an external vacuum system - a mechanical, non-surgical method of filling the penis with blood and simulating a natural erection.

- Outstanding value for money
- Quick and easy use – 10 second preparation
- Sustained erection for up to 30 minutes
- Ideal exercise device for penile enlargement as an adjunct to other therapies, five minutes a day for three weeks noticeably increases size and rigidity
- Safe and reliable for long-term users
- Low incidence of side-effects
- Complete and simple user control
- A compact, silent device in a discreet carry case
- A suitable option for a wide range of patients including those who have failed other therapies



THE ANATOMY OF THE PENIS



Introduction

A normal erection involves an eight-fold increase in the amount of blood flowing into the penis. Erectile dysfunction or impotence can be caused by:

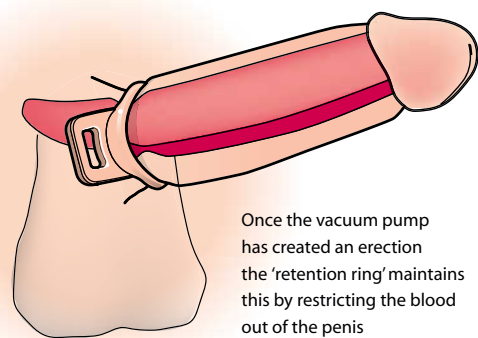
- Drug or alcohol abuse
- Diabetes
- Vascular disease
- Brain injury
- Spinal column injury (where sensation has not been lost)
- Strokes
- Invalidity due to paralysis
- MS
- Post surgical procedures
- Medication
- Psychogenic factors
- Tight foreskin
- Peyronies disease
- Endocrinological disorders

A Simple and Fast Erection

Erectease is a mechanical, non-surgical method of filling the penis with blood and simulating a natural erection.

Patients select one of three soft suitably sized retention rings and attach it to the vacuum chamber. The vacuum chamber is placed over the penis and pumped, which quickly draws blood into the penis. During this process pressure is controlled using the finger valve.

When fully erect, the ring slides onto the penis base to maintain the appropriate BP, and then the vacuum chamber is removed. The patient proceeds with intercourse before reducing BP by pulling the ring handles outwards to enable the penis to go back to a flaccid state before removing the ring completely.



Once the vacuum pump has created an erection the 'retention ring' maintains this by restricting the blood out of the penis

Contents:

- A - Pump
- B - Loading cones
- C - Sealing & Transfer Collar
- D - Lubricant
- E - Retention rings - 3 sizes; 25mm, 32mm and 40mm diameter

The kit of parts fit into a discreet carry bag

